

# Risland Meadowbank

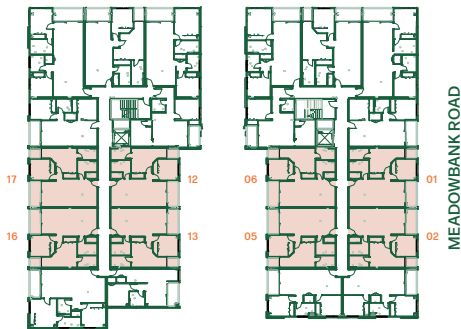
6-14 MEADOWBANK ROAD, MEADOWBANK, AUCKLAND 1072

## Type B

Bedroom	2
Bathroom	2

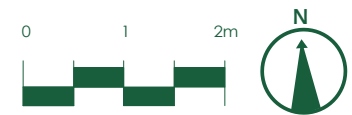
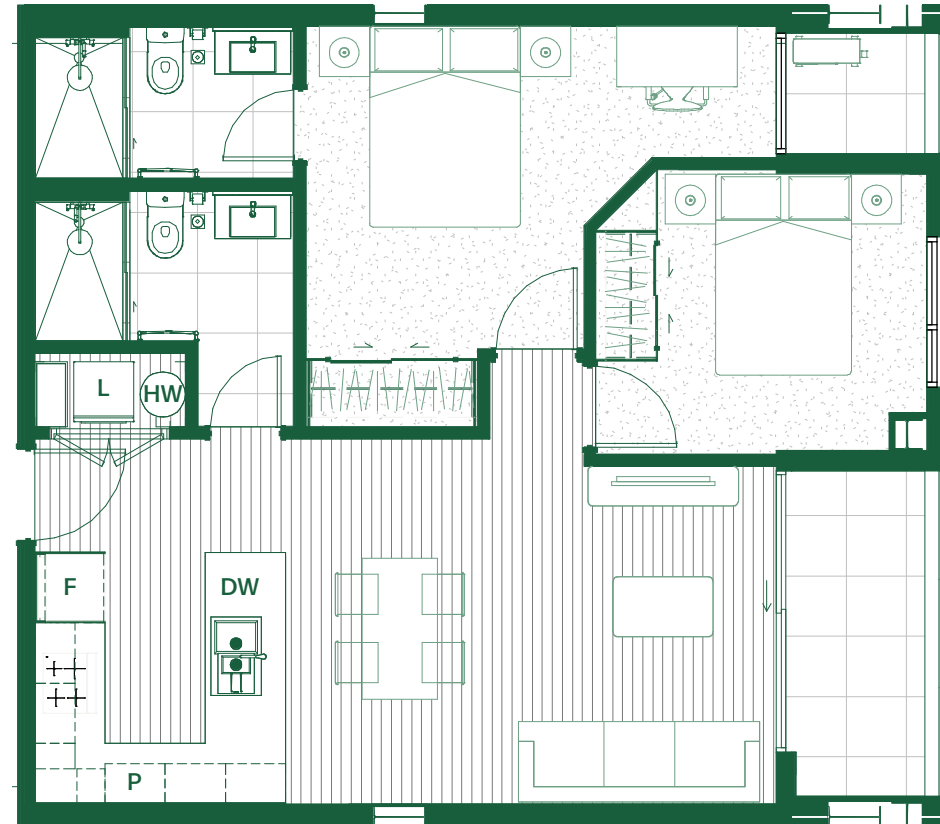
Level:	Apt No:	Floor Area:	Balcony Area:	Total Area:
G	G16 W	66.9m <sup>2</sup>	6.4m <sup>2</sup>	73.3m <sup>2</sup>
	G17 W	66.9m <sup>2</sup>	6.4m <sup>2</sup>	73.3m <sup>2</sup>
L1	101 E	66.9m <sup>2</sup>	6.4m <sup>2</sup>	73.3m <sup>2</sup>
	102 E	66.9m <sup>2</sup>	6.4m <sup>2</sup>	73.3m <sup>2</sup>
	105 E	66.9m <sup>2</sup>	6.4m <sup>2</sup>	73.3m <sup>2</sup>
	106 E	66.9m <sup>2</sup>	6.4m <sup>2</sup>	73.3m <sup>2</sup>
	112 W	66.9m <sup>2</sup>	6.4m <sup>2</sup>	73.3m <sup>2</sup>
	113 W	66.9m <sup>2</sup>	6.4m <sup>2</sup>	73.3m <sup>2</sup>
	116 W	66.9m <sup>2</sup>	6.4m <sup>2</sup>	73.3m <sup>2</sup>
L2	201 E	66.9m <sup>2</sup>	6.4m <sup>2</sup>	73.3m <sup>2</sup>
	202 E	66.9m <sup>2</sup>	6.4m <sup>2</sup>	73.3m <sup>2</sup>
	205 E	66.9m <sup>2</sup>	6.4m <sup>2</sup>	73.3m <sup>2</sup>
	206 E	66.9m <sup>2</sup>	6.4m <sup>2</sup>	73.3m <sup>2</sup>
	212 W	66.9m <sup>2</sup>	6.4m <sup>2</sup>	73.3m <sup>2</sup>
	213 W	66.9m <sup>2</sup>	6.4m <sup>2</sup>	73.3m <sup>2</sup>
	216 W	66.9m <sup>2</sup>	6.4m <sup>2</sup>	73.3m <sup>2</sup>
L3	301 E	66.9m <sup>2</sup>	6.4m <sup>2</sup>	73.3m <sup>2</sup>
	302 E	66.9m <sup>2</sup>	6.4m <sup>2</sup>	73.3m <sup>2</sup>
	305 E	66.9m <sup>2</sup>	6.4m <sup>2</sup>	73.3m <sup>2</sup>
	306 E	66.9m <sup>2</sup>	6.4m <sup>2</sup>	73.3m <sup>2</sup>

### Site location (GF-L3)



WEST BUILDING

EAST BUILDING



F	• Fridge
P	• Pantry
DW	• Dishwasher
L	• Laundry
HW	• Hot Water Cylinder

\*GFA: Floor areas stated are Gross Floor Area. Gross Floor Area is measured from the outside face of the exterior wall and to the centreline of inter-tenancy walls. Where units meet a common area, the Gross Floor Area measurement is taken to the centreline of the shared wall.

DISCLAIMER: Every Precaution has been taken to establish the accuracy of the material herein at the time of printing, however, no responsibility will be taken for any errors/omissions. Prospective purchasers should not confine themselves solely to the content of this material and acknowledge that they have received recommendation and had reasonable opportunity to seek independent legal, financial, accounting, technical and other advice. The material herein was prepared solely for marketing purposes prior to the commencement of construction and the approval of necessary Territorial Authority consents. The final building design and materials are subject to Auckland Council approval. The Developer reserves the right to increase or decrease the number of apartments and floors according to market demand and therefore sizes and layouts of apartments may vary. Changes may be made during development and all dimensions, finishes, fittings and specifications are subject to change without notice. All apartment areas include the winter garden where applicable and are measured in accordance with the Sale and Purchase Agreement. All illustrations are artist's impressions only. Loose furniture, feature lighting and window dressings are shown for illustration purposes only and are excluded from the purchase price.